

MONTHLY MEMBERSHIP PROGRESS REPORT

LOCATION ZAMBIA

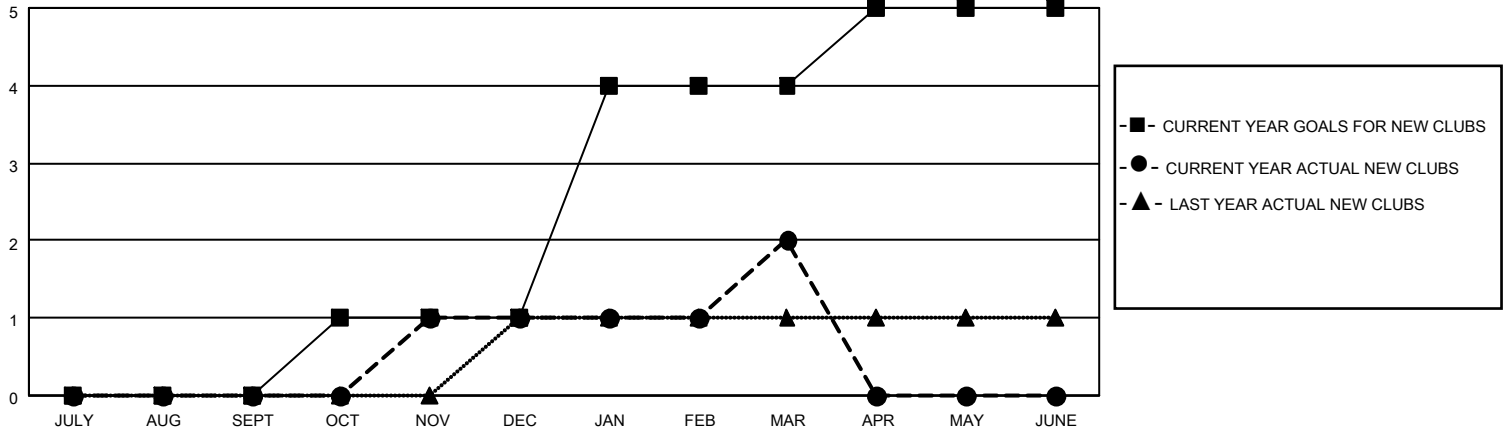
District 413

Results as of: 3/31/2022

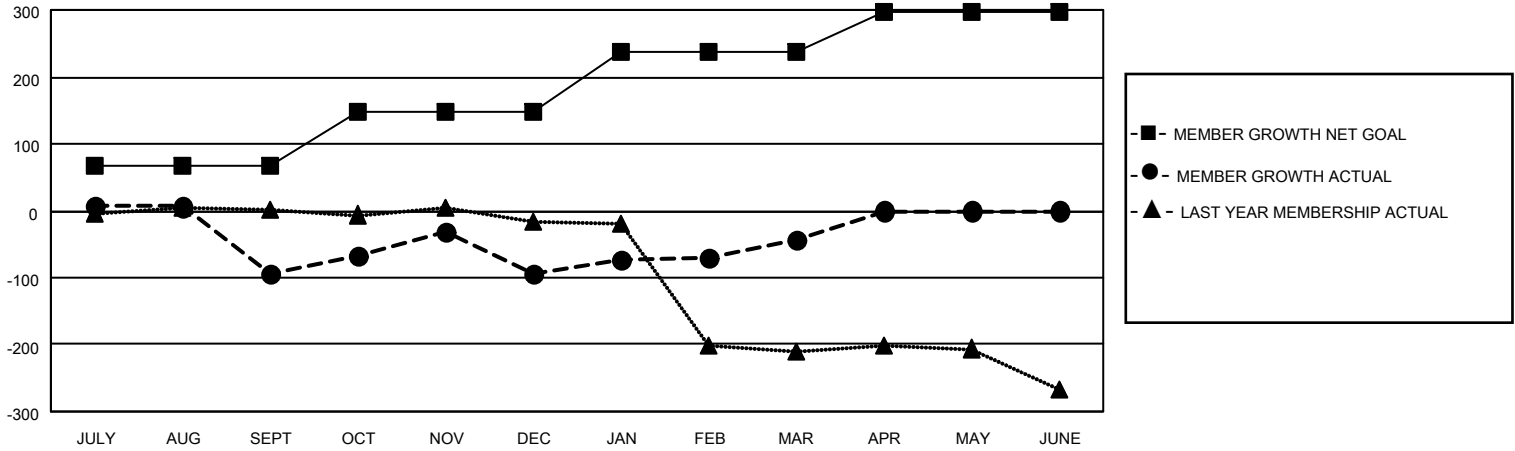
Clubs			
RESULTS FOR 2021-2022			
QUARTER	NEW CLUB GOAL	NEW CLUBS	DROPPED CLUBS
JULY/AUG/SEPT	0	0	6
OCT/NOV/DEC	1	1	3
JAN/FEB/MAR	3	1	1
APR/MAY/JUNE	1	0	0

Members			
RESULTS FOR 2021-2022			
QUARTER	MEMBER GROWTH NET GOAL	MEMBER GROWTH ACTUAL	DROPPED MEMBERS ACTUAL (including transfers)
JULY/AUG/SEPT	68	65	113
OCT/NOV/DEC	80	187	123
JAN/FEB/MAR	90	111	30
APR/MAY/JUNE	60	0	0

GOALS AND ACTUAL NEW CLUBS CUMULATIVE



GOALS AND ACTUAL MEMBERS CUMULATIVE



DROPPED CLUBS: 10

36 CLUBS OF 53 ADDED 1 OR MORE NEW MEMBERS

GENDER DISTRIBUTION

MALE	635 (53.63%)
FEMALE	548 (46.28%)
NON BINARY	1 (0.08%)
PREFER NOT TO ANSWER	0 (0.00%)

DROPPED MEMBERS

DECEASED	8
CLUB CANCELLED	174
OTHER	84
TOTAL	266

[CLICK HERE FOR CUMULATIVE MEMBERSHIP DATA](#)

TOTAL FAMILY UNIT MEMBERS	62
FAMILY MEMBERS PAYING HALF DUES	32